



HYC-309

# Pharmacy Refrigerator

## Scope of Application :

The product is used to store biological drugs and items at a temperature of 2-8°C. Typically used within pharmacy, pharma production, public health, hospitals and other life science laboratories.

## Innovative Design

- Energy-efficient technology
- Superior performance
- Safe and reliable
- Frequency conversion compressor and green HC refrigerant
- Convenient to use

## Product Advantages



### Superior performance

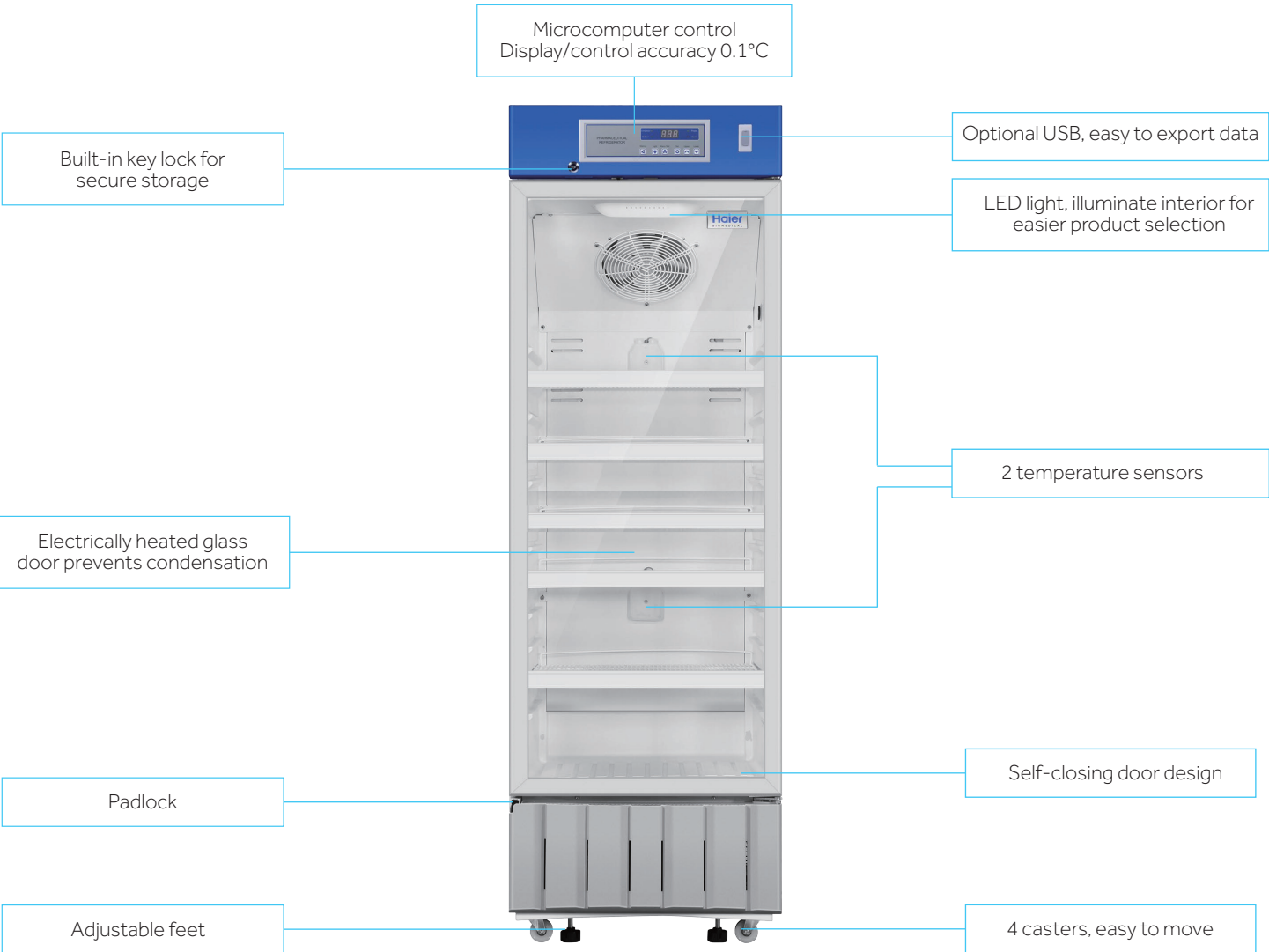
- Microcomputer controller, display/control accuracy 0.1°C
- Temperature range 2-8°C, temperature uniformity  $\pm 2^\circ\text{C}$
- Energy-efficient conversion compressors and non-toxic, environmentally-friendly hydrocarbon refrigerant
- Self-closing door design
- Electrically heated glass door prevents condensation
- Multiple interface options - USB, RS485 and printer



### Safe and reliable

- Key lock and provision for padlock to ensure safe and secure product storage
- Multiple alarms: High/Low temperature alarm, high ambient temperature alarm, door ajar alarm, power failure, low battery, sensor error, comms error and remote alarm contacts.
- Alarm mode: Audible/visual and remote alarm with battery back-up which continuously alarms for up to 48 hours in the event of a power failure

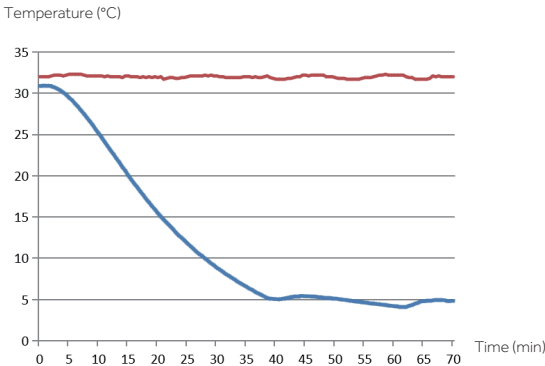
## Product Parts Diagram



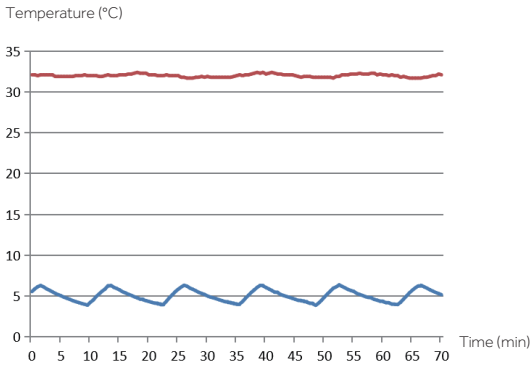
Temperature Curve



Cool Down Curve at 32°C Ambient temperature

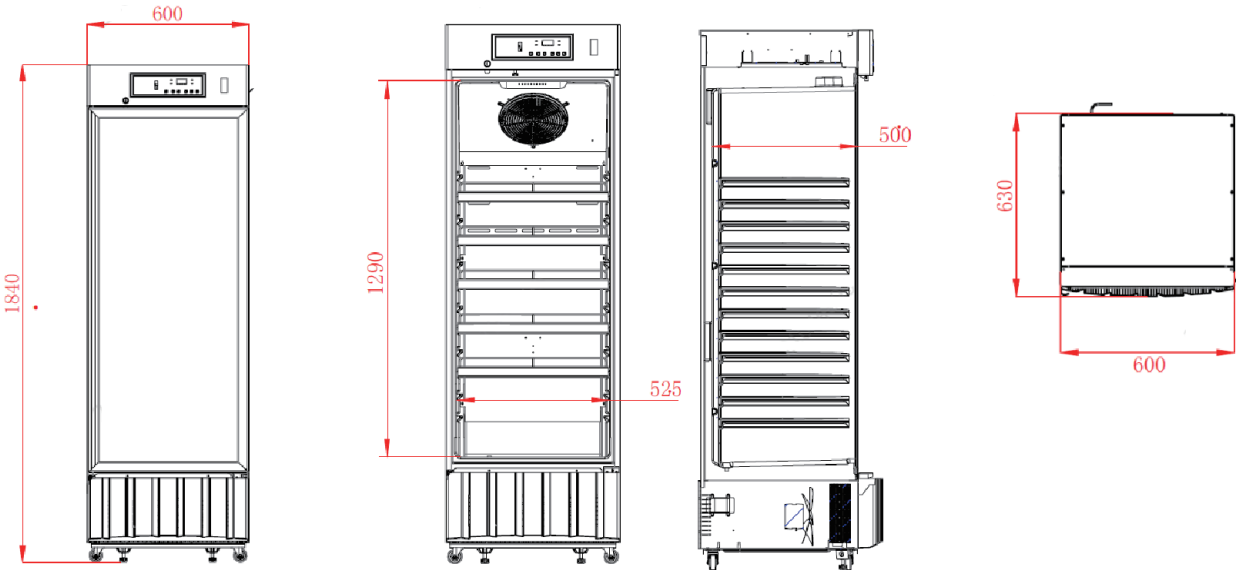


Stability Curve at 32°C Ambient temperature



— Ambient Temperature  
— Internal Temperature

Product Dimension Drawings





Model		HYC-309	
Technical Data	Cabinet Type	Upright	
	Climate Class	N	
	Cooling Type	Forced air cooling	
	Defrost Mode	Auto	
	Refrigerant	HC	
	Sound Level (dB(A))	41	
Performance	Temperature Range (°C)	2-8	
Control	Controller	Microprocessor	
	Display	LED	
Electrical Data	Power Supply (V/Hz)	220-240/ 50/60	
	Electrical Current (A)	1.9	
Dimensions	Capacity (L/Cu.Ft)	309/10.91	
	Net/Gross Weight (approx)	kg	77/87
		lbs	169.76/191.80
	Interior Dimensions (W*D*H)	mm	525*500*1290
		in	20.67*19.69*50.79
	Exterior Dimensions (W*D*H)	mm	600*630*1840
		in	23.62*24.80*72.44
	Packing Dimensions (W*D*H)	mm	660*670*2060
in		25.98*26.38*81.10	
Container Load (20'/40'/40'H)		24/48/48	
Alarms	High/Low Temperature	Y	
	High Ambient Temperature	Y	
	Door Ajar	Y	
	Power Failure	Y	
	Low Battery	Y	
	Sensor Error	Y	
	Communication Failure Alarm	Y	
	Remote Alarm	Y	
Accessories	Caster	4	
	Foot	2	
	Porthole	1	
	Shelves/Drawers	5/-	
	Printer	Optional	
	USB Interface	Optional	
	RS485	Optional	
Others	Certification	CE	

\*Haier Biomedical reserves the right to change products and specifications without prior notice.



# WolfLabs

**Pricing on any accessories shown can be found by keying the part number into the search box on our website.**

The specifications listed in this brochure are subject to change by the manufacturer and therefore cannot be guaranteed to be correct. If there are aspects of the specification that must be guaranteed, please provide these to our sales team so that details can be confirmed.

**[www.wolflabs.co.uk](http://www.wolflabs.co.uk)**

**Tel : 01759 301142**

**Fax : 01759 301143**

**[sales@wolflabs.co.uk](mailto:sales@wolflabs.co.uk)**

Please contact us if this literature doesn't answer all your questions.